

WaterHog® Inlay Mats

Logo • Scraper/Wiper Mats • Indoor/Outdoor

WaterHog Inlay mats feature your logo inlaid with razor-sharp precision in a WaterHog mat. During the precise inlay process, the area that will display your logo is cut from the mat and appropriate colors are inlaid in the cut-out, much like a jigsaw puzzle.



- **Clean & Dry** – Bi-level surface effectively scrapes dirt and moisture from shoes, trapping it beneath shoe level to prevent tracking; water dam border holds moisture keeping it off your floors (WaterHog mats can hold up to 1.5 gallons of water per square yard)
- **Durable & Fade Resistant** – Reinforced rubber nubs prevent pile from crushing and extend the performance life of the mat; solution-dyed fabric is fade-resistant
- **Safe** – Beveled edges provide a safe transition from floor to mat; certified high-traction by the National Floor Safety Institute (NFSI)
- **Eco-Friendly** – Rubber backing contains 20% post-consumer recycled rubber from car tires
- Available in 19 colors with choice of classic rubber border or fashion fabric border
- Features 78-mil SBR rubber with choice of smooth or universal cleated backing



Aquamarine*



Bluestone



Bordeaux



Camel



Charcoal



Dark Brown



Evergreen



Gold*



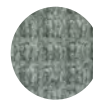
Light Green*



Medium Blue



Medium Brown



Medium Grey



Navy



Orange*



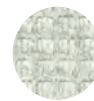
Purple*



Red/Black



Solid Red*



White*



Yellow*

*These colors are available in 3' and 4' widths only.

WaterHog® Inlay Mats

Logo • Scraper/Wiper Mats • Indoor/Outdoor



Product No. 234 (classic border), 235 (fashion border)
3/8" thickness

Size (ft.)	Size (in.)	Shipping Weight
2' x 3'	23" x 35"	5 lbs.
3' x 4'	35" x 45"	8 lbs.
3' x 5'	35" x 58"	11 lbs.
3' x 10'	35" x 116"	20 lbs.
3' x 12'	35" x 142"	24 lbs.
3' x 16'	35" x 189"	32 lbs.
3' x 20'	35" x 236"	40 lbs.
4' x 6'	45" x 69"	16 lbs.
4' x 8'	45" x 96"	21 lbs.
4' x 10'	45" x 116"	26 lbs.
4' x 12'	45" x 142"	31 lbs.
4' x 16'	45" x 189"	41 lbs.
4' x 20'	45" x 236"	51 lbs.
6' x 8'	70" x 95"	32 lbs.
6' x 12'	70" x 142"	48 lbs.
6' x 16'	70" x 189"	63 lbs.
6' x 20'	70" x 236"	79 lbs.

Note: Available in special sizes with widths of 3' (35"), 4' (45"), and 6' (70") and whole foot lengths up to 30'. Mats up to 40' are available with smooth and cleated backing options. Mats over 40' are available in smooth backing only.

Mat sizes are approximate as rubber shrinks and expands in conjunction with temperature and time. Tolerable manufacturing size variance is 3-5%.



Inlay Logo

Inlay process results in razor-sharp precision

HDi3.com

815-547-3737

sales@2hdi.com



Classic Rubber Border

Fashion Fabric Border



WaterHog Impressions HD[®] Mats

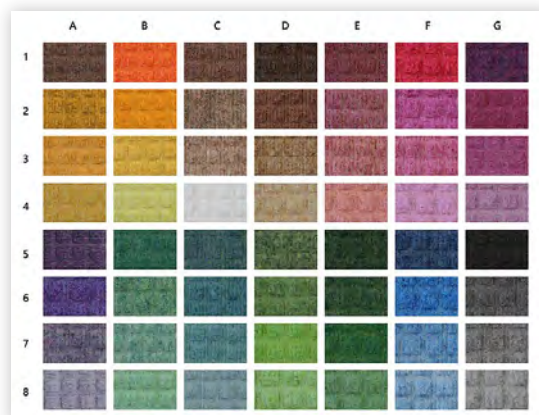
Logo • Scraper/Wiper Mats • Indoor/Outdoor

WaterHog Impressions HD mats feature your custom logo or message digitally printed on a WaterHog mat. These mats are ideal for use as a slip-resistant entrance mat to showcase your custom logo or artwork, or in any area where moisture, tracking, or dripping occurs.



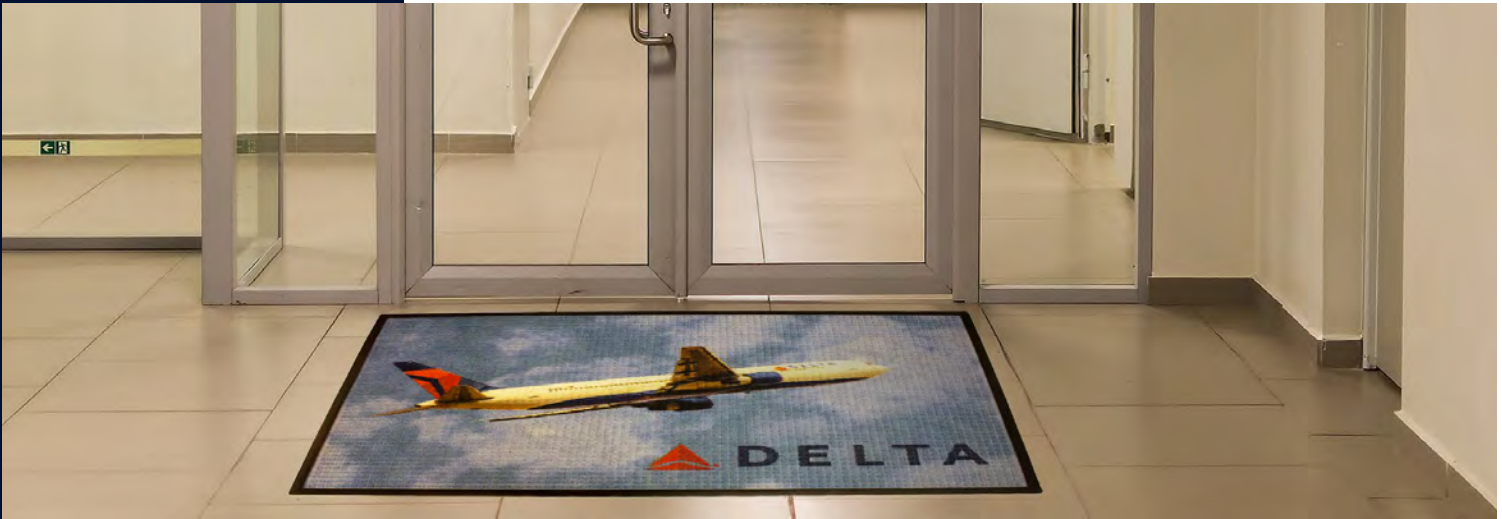
- **Clean & Dry** – Bi-level surface effectively scrapes dirt and moisture from shoes, trapping it beneath shoe level to prevent tracking; water dam border holds moisture keeping it off your floors (WaterHog mats can hold up to 1.5 gallons of water per square yard)
- **Durable** – Reinforced rubber nubs prevent pile from crushing and extend the performance life of the mat
- **Safe** – Beveled edges provide a safe transition from floor to mat; certified high-traction by the National Floor Safety Institute (NFSI)
- 56 standard color options
- Available with choice of classic rubber border or fashion fabric border
- Features 65-mil nitrile rubber with choice of smooth or universal cleated backing

56 Standard Color Options
Display your custom logo/artwork in high definition



WaterHog Impressions HD® Mats

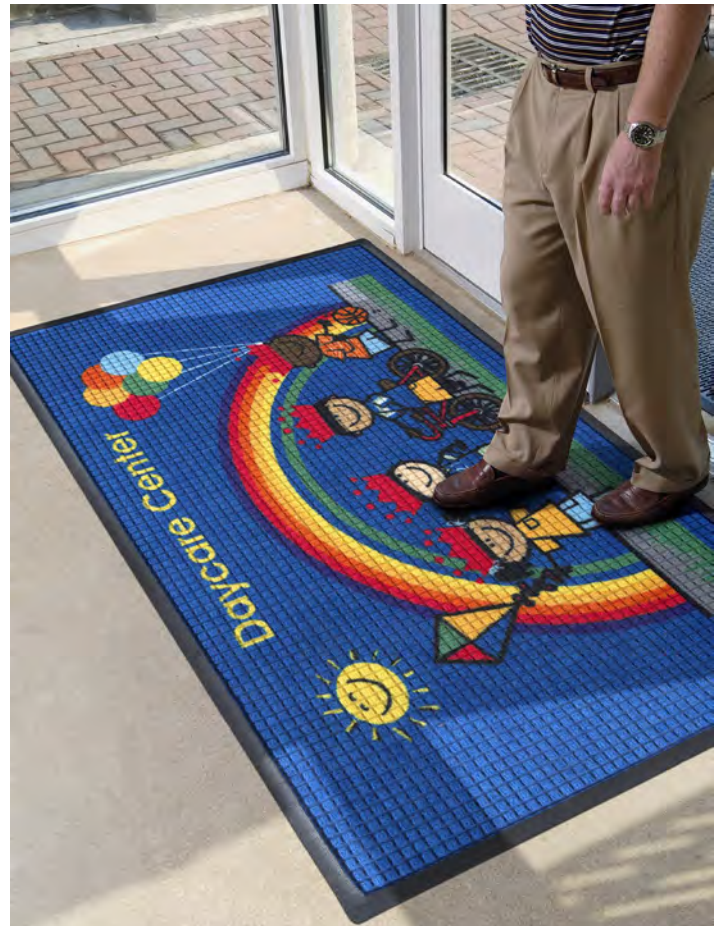
Logo • Scraper/Wiper Mats • Indoor/Outdoor



3/8" Product No. 2381 (classic border)
3/8" Product No. 2380 (fashion border)

Size (ft.)	Size (in.)	Shipping Weight
2' x 3'	23" x 35"	6 lbs.
3' x 4'	35" x 47"	9 lbs.
3' x 5'	35" x 59"	11 lbs.
3' x 10'	35" x 119"	20 lbs.
3' x 12'	35" x 143"	24 lbs.
3' x 16'	35" x 191"	31 lbs.
3' x 20'	35" x 239"	38 lbs.
4' x 6'	45" x 69"	16 lbs.
4' x 8'	45" x 95"	22 lbs.
6' x 8'	68" x 95"	32 lbs.
6' x 10'	68" x 119"	37 lbs.
6' x 12'	68" x 143"	45 lbs.
6' x 16'	68" x 191"	60 lbs.
6' x 20'	68" x 239"	74 lbs.

Note: Mat sizes are approximate as rubber shrinks and expands in conjunction with temperature and time. Tolerable manufacturing size variance is 3-5%.



HDI3.com

815-547-3737

sales@2hdi.com



Classic Impressions™ Logo Mats

Logo • Carpeted (Wiper) Mats • Indoor

Classic Impressions mats feature your custom logo or artwork digitally printed on nylon carpet. Choose from 26 standard color options.



- **High-Quality Print** – Logos and designs are digitally printed; fine details, shading, and 3D images can be achieved; 26 standard color options available
- **Resilient** – High-twist, heat-set nylon (26-ounces per square yard) resists crushing to better trap dirt and extend the useful life of the mat
- **Safe** – Certified high-traction by the National Floor Safety Institute (NFSI); available with three backing options (smooth, universal cleat, or suction backing) to ensure the mat stays in place on your floor surface
- Available with choice of SBR (48 mil), nitrile rubber (52 mil, 65 mil, 90 mil), or vinyl (70 mil) backing
- When backed with nitrile rubber this mat is commercially launderable



Aquamarine



Black



Burgundy



Chocolate



Dark Gold



Dark Grey



Emerald Green



Forest Green



Gold



Hot Pink



Light Blue



Moss Green



Navy



Orange



Pearl White



Purple



Red



Rose



Royal Blue



Sandalwood



Silver



Suede



Turquoise



White



White Silver



Yellow

Classic Impressions™

Logo Mats

Logo • Carpeted (Wiper) • Indoor



Product No. 70

Size (ft.)	Size (in.)
2' x 3'	24" x 35"
3' x 4'	35" x 47"
3' x 5'	35" x 59"
3' x 10'	35" x 119"
4' x 6'	45" x 69"
4' x 8'	45" x 95"
5' x 8'	58" x 95"
5' x 10'	58" x 119"
6' x 10'	68" x 119"
6' x 12'	68" x 143"

Note: Special sizes available in widths of 3' (35"), 4' (45"), 5' (58"), or 6' (68") and lengths up to 40'.

Mat sizes are approximate as rubber shrinks and expands in conjunction with temperature and time. Tolerable manufacturing size variance is 3-5%.



HDI3.com

815-547-3737

sales@2hdi.com



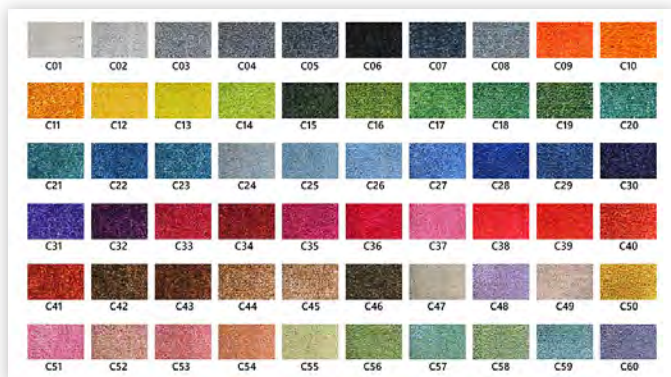
ColorStar® Impressions Logo Mats

Logo • Carpeted (Wiper) Mats • Indoor

ColorStar Impressions mats feature your custom logo or artwork digitally printed on eco-friendly PET (polyethylene terephthalate) fabric.



- **Photographic-Quality Print** – Logos and designs are digitally printed at 76 dpi, making fine details, shading, and 3D images achievable
- **Eco-Friendly** – PET (polyethylene terephthalate) carpet surface contains 50% post-consumer recycled content reclaimed from plastic bottles
- **Fade Resistant** – PET yarn has excellent color-fastness and is resistant to fading from repeated washing/cleaning
- **Stain Resistant** – PET yarn is naturally resistant to staining
- Choose from 60 standard colors
- Available with choice of SBR (48 mil), nitrile rubber (52 mil, 65 mil, 90 mil) or vinyl (70 mil) backing
- Commercially launderable (when backed with nitrile rubber)



COLORSTAR®
eco-friendly, high-performance mats

60 Standard Color Options
Photographic-Quality

ColorStar® Impressions Logo Mats

Logo • Carpeted (Wiper) Mats • Indoor



COLORSTAR®
eco-friendly, high-performance mats

Product No. 60	
Size (ft.)	Size (in.)
2' x 3'	24" x 35"
3' x 4'	35" x 47"
3' x 5'	35" x 59"
3' x 10'	35" x 119"
4' x 6'	45" x 69"
4' x 8'	45" x 95"
5' x 8'	58" x 95"
5' x 10'	58" x 119"
6' x 10'	68" x 119"
6' x 12'	68" x 143"

Note: Custom sizes available in widths of 3' (35"), 4' (45"), 5' (58"), or 6' (68") and lengths up to 40'.

Mat sizes are approximate as rubber shrinks and expands in conjunction with temperature and time.
Tolerable manufacturing size variance is 3-5%.



HDI3.com

815-547-3737

sales@2hdi.com

