



FLōW™

Low-foam neutral daily cleaner



Flōw is a low foam daily cleaner designed for cleaning floors and other hard surfaces. With a neutral pH, Flōw is safe to use as part of a routine maintenance program, even on polished concrete. Dilutable up to ½ ounce per gallon and with low foaming properties, Flōw helps to control costs associated with product usage and the empty and refill of automatic floor scrubbers.

Distributed By:



HDi
1890 W Chrysler Drive, Belvidere, IL 61008
sales@2hdi.com 815-547-3737
HDI3.com

Providing quality maintenance and chemical specialty solutions with unparalleled customer service since 1956



FEATURES

- Low foaming formula
- No rinse needed
- Neutral cleaner—safe for any surface not harmed by water
- Works great in automatic floor scrubbers, mop and bucket, and trigger sprayer applications

BENEFITS

- Reduces foam in recovery tank resulting in lower labor costs associated with emptying
- Minimizes the number of products needed for routine maintenance programs
- No-rinse formula reduces labor costs and saves time
- Won't dull finished floors or polished concrete

SURFACES

- Flōw is safe to use on all surfaces not harmed by water including floors, walls, woodwork, marble, plastic, metal, tile, polished concrete, and countertops

DIRECTIONS FOR USE

Flōw can be diluted at 1:256 (1/2 oz. per gallon) to 1:64 (2 oz. per gallon) for light-duty, everyday cleaning. For cleaning heavily soiled areas, Flōw can be diluted up to 1:32 (4 oz. per gallon) or 1:20 (6 oz. per gallon).

AUTOMATIC SCRUBBERS

1. Fill solution tank with water. Do not add Flōw prior to filling tank.
2. For lightly soiled, daily cleaning, dilute 1:256 to 1:64. No rinse required.
3. For heavily soiled areas, dilute up to 1:32 to 1:20.

MOP AND BUCKET CLEANING

1. Dilute Flōw based on soil load and frequency of cleaning.
2. Apply to the floor being cleaned. No rinse required.
3. For heavy soils, pick up soil and excess cleaning solution with a tightly wrung-out mop.

SPRAY & WIPE CLEANING

1. Dilute Flōw based on soil load and frequency of cleaning.
2. Apply to surface being cleaned. Wipe and let surface dry. No rinse required.

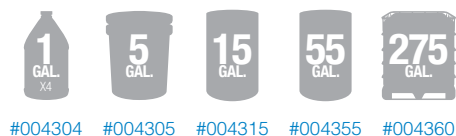
MACHINE CLEANING

1. Dilute Flōw based on soil load and frequency of cleaning.
2. Scrub with desired cleaning pad.
3. Pick up excess solution left behind by machine.

SPECIFICATION DATA

| | |
|------------------------------|------------------------|
| Dilution | 0.5 – 6 oz/gal |
| pH | 6 – 7 |
| Color | Light blue |
| Fragrance | Pleasant |
| Specific Gravity @ 24°C/75°F | 1.010 |
| Flash Point | >95°C/203°F |
| Stability: Shelf @ 24°C/75°F | 1 year minimum |
| Stability: Freeze/Thaw | Will withstand 1 cycle |

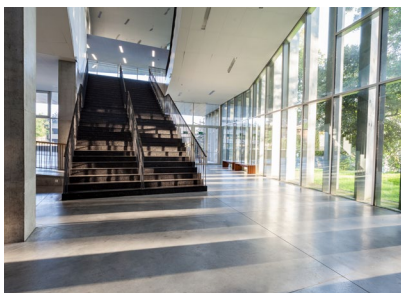
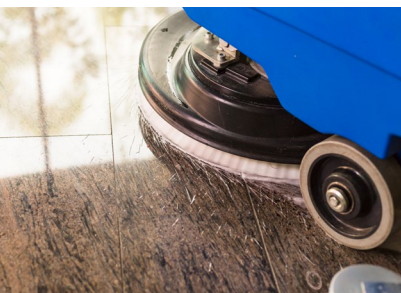
ORDERING INFORMATION



#004304 #004305 #004315 #004355 #004360

ADDITIONAL RESOURCES

Scan the QR code to access this product's safety information and documentation.



SAFETY: For institutional and industrial use only. Be sure to read all directions, precautionary and first aid statements on product labels before using this or any other Spartan product. If questions remain, consult your employer or a physician. Safety Data Sheets for all Spartan products are available from your authorized Spartan distributor and at www.spartanchemical.com. Workplace labels are available in English, Spanish, and French.

GUARANTEE: Spartan's modern manufacturing and laboratory control ensures uniform quality. If dissatisfied with performance of product, any unused portion may be returned for credit within 12 months of the date of manufacture.