



Provided by:



1890 Chrysler Dr.
Belvidere, IL 61008
815-547-3737
sales@2hdi.com
www.HDi3.com



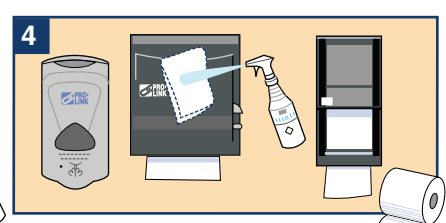
1 Gather equipment. Prepare area. Place "Restroom Closed" sign at the door.



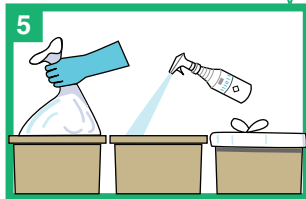
2 Wear proper personal protective equipment.



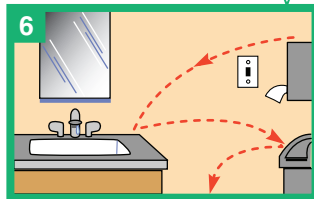
3 Spray inside and outside of toilets. Don't flush. Allow time for the disinfectant to work.



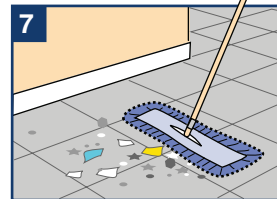
4 Refill supplies and clean all dispensers.



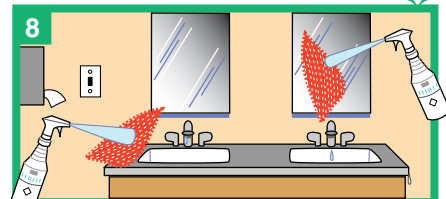
5 Remove trash, disinfect trash can and replace liners.



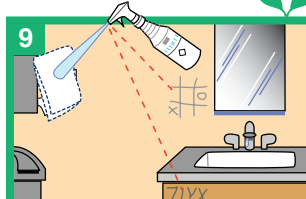
6 Dust from top to bottom; pick up trash as you go.



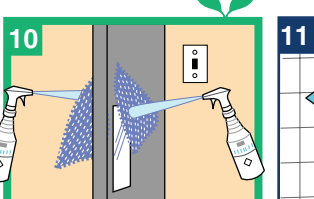
7 Dust mop the floor.



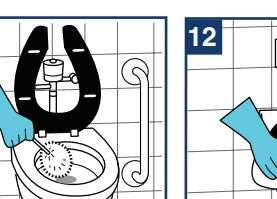
8 Spray and wipe sinks, counters and mirrors. Allow disinfectant to dwell.



9 Remove graffiti and disinfect all high touch surfaces.



10 Clean both sides of the entrance doors with a disinfectant.



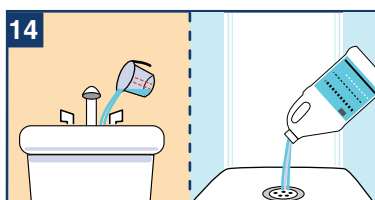
11 Use bowl mop as a plunger to remove excess water. Scrub inside of toilets. Flush.



12 Wipe outside of toilets. Change or rinse cloths frequently.



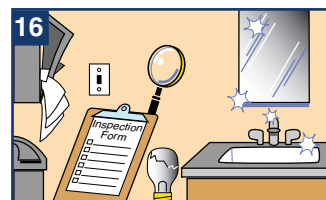
13 Clean the walls around the toilet and polish chrome.



14 Treat drains with drain maintainer if necessary.



15 Wet mop with a disinfectant cleaner.



16 Inspect your work and report any repairs as needed.

= Green Cleaning Process

Green Cleaning Tips

- Always apply the cleaner in a stream or onto the cloth.
- Use properly diluted products, preferably through a dispensing system.
- Make sure all spray bottles are properly labeled.
- Never mix cleaning products together.
- Periodically machine-scrub restroom floors with a disinfectant.
- Make sure appropriate dwell times for disinfectants are followed.
- Use microfiber cloths when possible, and use color-coded cloths by area.